

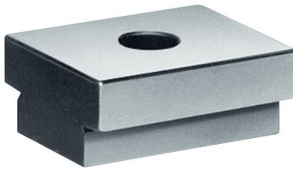


Our retail price is a recommendation only. Prices in offer may differ. All prices indicated 0,00 € will follow in the offer.

## AMF SLIDING BLOCK NO. 6322A NOMINAL DIMENSIONS OF GROOVE 18/20 MM FOR FIXED INSTALLATION

SKU: 4020772071592

Sliding block no. 6322A nominal dimensions of groove 18/20 mm for fixed installation



**Categories:** [T-slot bolts](#), [sliding blocks and nuts](#), [Workpiece clamping](#)

**Product Features:** For DIN 84 screws: M6 x 16 mm  
Nominal dimensions of groove: 18 / 20 mm  
Length: 25 mm  
Brand: AMF

Scope of delivery:  
1,00 ST Sliding block no. 6322A nominal dimensions of groove 18/20 mm for fixed installation |

### PRODUCT DESCRIPTION

For fixed installation

- C15 case-hardened
- Application: Fixed sliding blocks (no. 6322A) are screwed pairwise into the standard 20 mm width directional slots of vices or devices. By changing the sliding blocks, machines with different groove widths can be used. Further technical information:
- Nominal dimensions of groove at machine: 18mm
- Nominal dimensions of grooves at equipment: 20mm
- Recommended use: For fixed installation
- L: 25mm
- H: 10mm

### PRODUCT DATASHEET LEGAL NOTE

Please note that the information on this datasheet is provided without warranty and is intended only as non-binding information about the product. Any liability for damages or losses that may arise from the use of this information is excluded. We therefore recommend that you verify the information on this datasheet with other sources before making any decisions based on this information. Additional information about the product can be found on our website.