

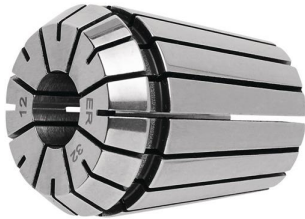


Our retail price is a recommendation only. Prices in offer may differ. All prices indicated 0,00 € will follow in the offer.

## PROMAT COLLET CHUCK TYPE ER 32 / 470 E CLAMPING DM 15 MM

**SKU:** 4015448513230

Collet chuck type ER 32 / 470 E clamping dm 15 mm



**Categories:** [Collet chucks and clamping sleeves](#), [Tool holder accessories](#)

**Product Features:** Clamping Ø: 15 mm  
Type: ER 32 / 470 E  
Brand: PROMAT

Scope of delivery:  
1,00 ST Collet chuck type ER 32 / 470 E clamping dm 15 mm |

### PRODUCT DESCRIPTION

According to DIN 6499-B

- Suitable for draw-in collet chuck type ER
- Intermediate dimensions are not necessary
- The tools are held along the entire clamping length and can also be clamped on the guide chamfer
- Concentricity and repeat accuracy: 5 µm Clamp diameter bridging: Nominal dimensions minus 1.0 mm

Further technical information:

- D: 33mm
- d: 15mm
- L: 40mm
- Clamp diameter bridging: Nominal dimensions minus 1.0mm

### PRODUCT DATASHEET LEGAL NOTE

Please note that the information on this datasheet is provided without warranty and is intended only as non-binding information about the product. Any liability for damages or losses that may arise from the use of this information is excluded. We therefore recommend that you verify the information on this datasheet with other sources before making any decisions based on this information. Additional information about the product can be found on our website.