

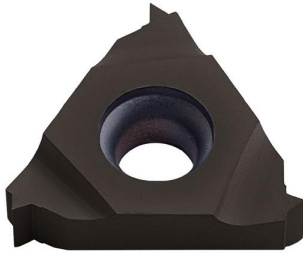


Our retail price is a recommendation only. Prices in offer may differ. All prices indicated 0,00 € will follow in the offer.

PROMAT INSERT 16IR075 ISO PK30 RIGHT INTERNAL ROTATION

SKU: 4015448669487

Insert 16IR075 ISO PK30 right internal rotation



Categories: [Indexable insert tools](#),
[Interchangeable cutting inserts](#)

Product Features: Coating: TiAlN-coated
ISO designation: 16IR075 ISO
Type: PK30
Thread pitch: 0.75 mm
Sense of rotation: Right
WSP: 16IR
Brand: PROMAT

[Datasheet](#)
[Datasheet](#)
[Datasheet](#)

Scope of delivery:
2,00 ST Insert 16IR075 ISO PK30 right internal rotation |

PRODUCT DESCRIPTION

For internal threading

- TiAlN-coated Further technical information:
- d: 9.525mm
- Area of application: Internal rotation
- s: 3,47mm
- x: 0.5mm
- l: 16,5mm

PRODUCT DATASHEET LEGAL NOTE

Please note that the information on this datasheet is provided without warranty and is intended only as non-binding information about the product. Any liability for damages or losses that may arise from the use of this information is excluded. We therefore recommend that you verify the information on this datasheet with other sources before making any decisions based on this information. Additional information about the product can be found on our website.