

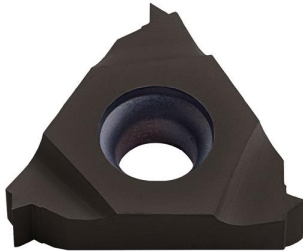


Our retail price is a recommendation only. Prices in offer may differ. All prices indicated 0,00 € will follow in the offer.

## PROMAT INSERT 16IR300 ISO PK30 RIGHT INTERNAL ROTATION

**SKU:** 4015448669647

Insert 16IR300 ISO PK30 right internal rotation



---

**Categories:** [Indexable insert tools](#),  
[Interchangeable cutting inserts](#)

**Product Features:** Coating: TiAlN-coated  
ISO designation: 16IR300 ISO  
Type: PK30  
Thread pitch: 3 mm  
Sense of rotation: Right  
WSP: 16IR  
Brand: PROMAT

[Datasheet](#)  
[Datasheet](#)  
[Datasheet](#)

Scope of delivery:  
2,00 ST Insert 16IR300 ISO PK30 right internal rotation |

### PRODUCT DESCRIPTION

For internal threading

- TiAlN-coated Further technical information:
- d: 9.525mm
- Area of application: Internal rotation
- s: 3,47mm
- x: 1.6mm
- l: 16,5mm

### PRODUCT DATASHEET LEGAL NOTE

Please note that the information on this datasheet is provided without warranty and is intended only as non-binding information about the product. Any liability for damages or losses that may arise from the use of this information is excluded. We therefore recommend that you verify the information on this datasheet with other sources before making any decisions based on this information. Additional information about the product can be found on our website.