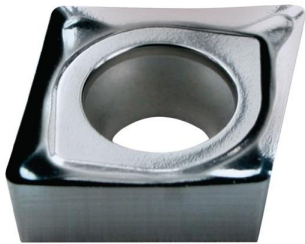




Our retail price is a recommendation only. Prices in offer may differ. All prices indicated 0,00 € will follow in the offer.



PROMAT INSERT CCGT060202-AL N20 ALUMINIUM MACHINING

SKU: 4015448510543

Insert CCGT060202-AL N20 aluminium
machining

Categories: [Indexable insert tools](#),
[Interchangeable cutting inserts](#)

Product Features: Coating: Uncoated, highly
polished

ISO designation: CCGT060202-AL

Type: N20

WSP: CCGT 0602

Brand: PROMAT

[Datasheet](#)

[Datasheet](#)

[Datasheet](#)

[Datasheet](#)

Scope of delivery:

10,00 ST Insert CCGT060202-AL N20
aluminium machining |

PRODUCT DESCRIPTION

For the processing of aluminium Further technical information:

- d: 6.35mm
- Area of application: Aluminium processing
- r: 0.2mm
- d1: 2.8mm
- s: 2,38mm
- l: 6,4mm
- Max. feed rate: - mm/rev in steel / - mm/rev in stainless steel / - mm/rev in cast / 0.15 mm/rev in NI metals / - mm/rev in superalloys / - mm/rev in hardened steels
- Vc max.: - m/min in steel / - m/min in stainless / - m/min in cast / 715 m/min in NI metals / - m/min in superalloys / - m/min in hardened steels
- Vc min.: - m/min in steel / - m/min in stainless / - m/min in cast / 170 m/min in NI metals / - m/min in superalloys / - m/min in hardened steels
- Min. cutting depth: - mm in steel / - mm in stainless / - mm in cast / 0.3 mm in NI metals / - mm in



superalloys / - mm in hardened steels

- Max. cutting depth: - mm in steel / - mm in stainless / - mm in cast / 3 mm in NI metals / - mm in superalloys / - mm in hardened steels

- Min. feed rate: - mm/rev in steel / - mm/rev in stainless steel / - mm/rev in cast / 0.06 mm/rev in NI metals / - mm/rev in superalloys / - mm/rev in hardened steels

PRODUCT DATASHEET LEGAL NOTE

Please note that the information on this datasheet is provided without warranty and is intended only as non-binding information about the product. Any liability for damages or losses that may arise from the use of this information is excluded. We therefore recommend that you verify the information on this datasheet with other sources before making any decisions based on this information. Additional information about the product can be found on our website.