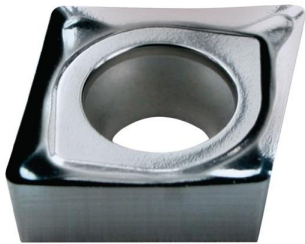




Our retail price is a recommendation only. Prices in offer may differ. All prices indicated 0,00 € will follow in the offer.



## PROMAT INSERT CCGT09T304-AL N20 ALUMINIUM MACHINING

**SKU:** 4015448510567

Insert CCGT09T304-AL N20 aluminium  
machining

---

**Categories:** [Indexable insert tools](#),  
[Interchangeable cutting inserts](#)

**Product Features:** Coating: Uncoated, highly  
polished

ISO designation: CCGT09T304-AL

Type: N20

WSP: CCGT 09T3

Brand: PROMAT

[Datasheet](#)

[Datasheet](#)

[Datasheet](#)

[Datasheet](#)

Scope of delivery:

10,00 ST Insert CCGT09T304-AL N20  
aluminium machining |

## PRODUCT DESCRIPTION

For the processing of aluminium Further technical information:

- d: 9.53mm
- Area of application: Aluminium processing
- r: 0.4mm
- d1: 4.4mm
- s: 3,97mm
- l: 9,7mm
- Max. feed rate: - mm/rev in steel / - mm/rev in stainless steel / - mm/rev in cast / 0.3 mm/rev in NI metals / - mm/rev in superalloys / - mm/rev in hardened steels
- Vc max.: - m/min in steel / - m/min in stainless / - m/min in cast / 610 m/min in NI metals / - m/min in superalloys / - m/min in hardened steels
- Vc min.: - m/min in steel / - m/min in stainless / - m/min in cast / 135 m/min in NI metals / - m/min in superalloys / - m/min in hardened steels
- Min. cutting depth: - mm in steel / - mm in stainless / - mm in cast / 0.4 mm in NI metals / - mm in



superalloys / - mm in hardened steels

- Max. cutting depth: - mm in steel / - mm in stainless / - mm in cast / 4.5 mm in NI metals / - mm in superalloys / - mm in hardened steels

- Min. feed rate: - mm/rev in steel / - mm/rev in stainless steel / - mm/rev in cast / 0.1 mm/rev in NI metals / - mm/rev in superalloys / - mm/rev in hardened steels

#### PRODUCT DATASHEET LEGAL NOTE

Please note that the information on this datasheet is provided without warranty and is intended only as non-binding information about the product. Any liability for damages or losses that may arise from the use of this information is excluded. We therefore recommend that you verify the information on this datasheet with other sources before making any decisions based on this information. Additional information about the product can be found on our website.