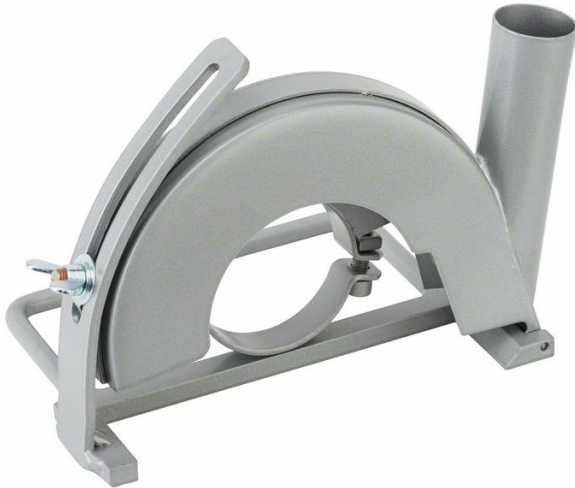




Our retail price is a recommendation only. Prices in offer may differ. All prices indicated 0,00 € will follow in the offer.



ROBERT BOSCH POWER TOOLS GMBH CUTTING GUIDE WITH DUST EXTRACTION OUTLET. FOR SMALL ANGLE GRINDERS

SKU: 3165140485739

Cutting guide with dust extraction outlet. For small angle grinders

Categories: [Accessories for BOSCH professional](#), [Machine accessories](#)

Product Features: Diameter mm: 180
Benefit HL (short): Variable Adjustment of Cutting Depths
Performance Claim Text: Variable Cutting Depths-Adjustment
(Version) Key RTB: Enables continuous, uncomplicated variable adjustment of cutting depths and includes 35-mm dust extraction outlet
Specific RTB1: Cutting Guide's handle can be attached from either side for full protection
Specific RTB2: Steep extraction outlet enables cutting close to edges
Product text, Accessories grey: Cutting guide with dust extraction outlet
Product text, Accessories grey: Coding, clamp fitting, screw-type fastening
SOL Date: 01.03.2009
Novelty: no

Scope of delivery:
1 ST Cutting guide with dust extraction outlet.
For small angle grinders |

PRODUCT DESCRIPTION

The Cutting Guide is a tool-free dust extraction guard for use with angle grinders. Suitable for: GWS 22-180 LVI (0 601 890 D..) Professional.



Article ID: 2602025284

PRODUCT DATASHEET LEGAL NOTE

Please note that the information on this datasheet is provided without warranty and is intended only as non-binding information about the product. Any liability for damages or losses that may arise from the use of this information is excluded. We therefore recommend that you verify the information on this datasheet with other sources before making any decisions based on this information. Additional information about the product can be found on our website.