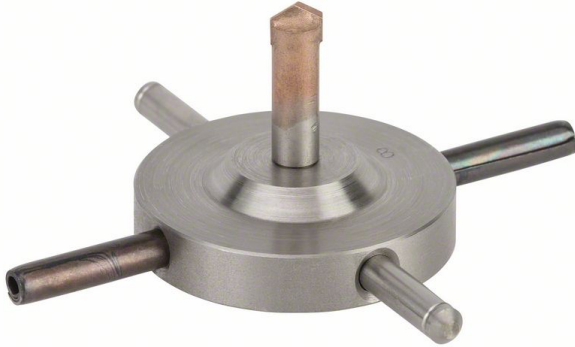




Our retail price is a recommendation only. Prices in offer may differ. All prices indicated 0,00 € will follow in the offer.



## ROBERT BOSCH POWER TOOLS GMBH DRILLING CROSS FOR DRY CORE CUTTERS AND CORE EDGE SINKERS. FOR DIAMOND DRILLS

**SKU:** 3165140110051

Drilling cross for dry core cutters and core edge sinkers. For diamond drills

---

**Categories:** [Accessories for BOSCH professional](#), [Diamond drilling, cutting and grinding](#)

**Product Features:** Diameter/key width mm: 87

Benefit HL (short): Allows for Easy Drilling Starts

Performance Claim Text: Easy Drilling Starts (Version) Key RTB: Appropriate for building materials such as limestone, brick and masonry

Specific RTB1: For use with 1 1/4-inch UNC Dry Core Cutters

Specific RTB3: Unique power-change adapter with the fastest arbour system for locking/unlocking hole saw and pilot drills in one click

SOL Date: 19.07.2002

Novelty: no

Scope of delivery:

1 ST Drilling cross for dry core cutters and core edge sinkers. For diamond drills |

## PRODUCT DESCRIPTION

The Drilling Cross creates pilot holes to allow for easy drilling starts. It is appropriate for use in building materials such as limestone, brick and masonry. The Drilling Cross is designed for use with 1 1/4-inch UNC Dry Core Cutters.



Article ID: 2608597479

**PRODUCT DATASHEET LEGAL NOTE**

Please note that the information on this datasheet is provided without warranty and is intended only as non-binding information about the product. Any liability for damages or losses that may arise from the use of this information is excluded. We therefore recommend that you verify the information on this datasheet with other sources before making any decisions based on this information. Additional information about the product can be found on our website.