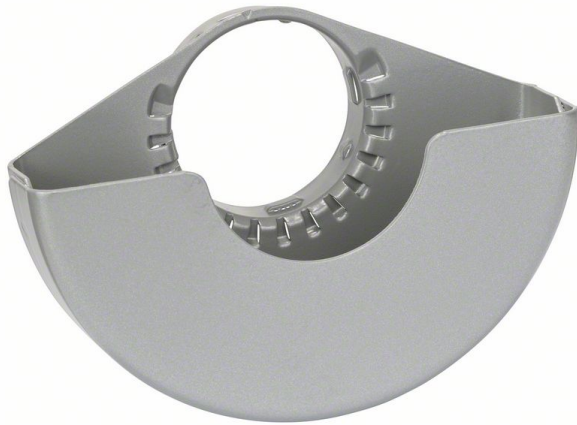




Our retail price is a recommendation only. Prices in offer may differ. All prices indicated 0,00 € will follow in the offer.



ROBERT BOSCH POWER TOOLS GMBH PROTECTIVE GUARD WITH COVER. FOR SMALL ANGLE GRINDERS

SKU: 3165140418706

Protective guard with cover. For small angle grinders

Categories: [Accessories for BOSCH professional](#), [Machine accessories](#)

Product Features: Diameter mm: 125

X-LOCK: no

Benefit HL (short): With Cover for Cut-Off Grinding

Performance Claim Text: Cut-Off Grinding (Version) Key RTB: Comes with a cover for cut-off grinding, coded to securely lock in place

Specific RTB1: Made according to standard EN/EC 60745

Specific RTB2: Compatible with angle grinders

Product text, Accessories grey: Protective guard with cover for cutting

Product text, Accessories grey: with easy-to-use adjustment and tool-free attachment

SOL Date: 17.03.2008

Novelty: no

Scope of delivery:

1 ST Protective guard with cover. For small angle grinders |

PRODUCT DESCRIPTION

The Protective Guard is intended for general grinding and sanding work and comes with a cover for cut-off grinding. Suitable for: GWS 8-14; GWS 8-115; GWS 8-125; GWS 8-125 C; GWS 9-125; GWS 9-125 C; GWS 9-125 CES; GWS 9-125 CMS; GWS 9-125 CS; GWS 9-125 CSS; GWS 9-125 S; GWS 10-125; GWS 10-125 C; GWS 10-125 CE; GWS 10-125 Z; GWS 11-125; GWS 11-125 CI; GWS 11-125 CIE; GWS 11-125 CIH; GWS 11-125 P; GWS 12-125 CI; GWS 12-125 CIE; GWS 12-125 CIEP; GWS 12-125 CIP; GWS 13-125 CI; GWS



13-125 CIE; GWS 14; GWS 14-125 CI; GWS 14-125 CIE; GWS 14-125 CIT; GWS 14-125 Inox; GWS 15-125 CI; GWS 15-125 CIE; GWS 15-125 CIEH; GWS 15-125 CIEP; GWS 15-125 CIH; GWS 15-125 CIP; GWS 15-125 CIT; GWS 15-125 CITH; GWS 17-125 CI; GWS 17-125 CIE; GWS 17-125 CIT; GWS 18V-125 C; GWS 18V-125 PC; GWS 18V-125 PSC; GWS 18V-125 SC; GWS 19-125 CIE; GWS 1000; GWS 1000 + SDS; GWS 1400; GWX 9-125 S; GWX 10-125; GWX 13-125; GWX 13-125 S; GWX 14-125; GWX 15-125 PS; GWX 17-125; GWX 17-125 S; GWX 17-125 T; GWX 18V-10 C; GWX 18V-10 PC; GWX 18V-10 PSC; GWX 18V-10 SC; GWX 19-125 S Professional; PWS 10-125 CE; PWS 13-125 CE.

Article ID: 2605510257

PRODUCT DATASHEET LEGAL NOTE

Please note that the information on this datasheet is provided without warranty and is intended only as non-binding information about the product. Any liability for damages or losses that may arise from the use of this information is excluded. We therefore recommend that you verify the information on this datasheet with other sources before making any decisions based on this information. Additional information about the product can be found on our website.